

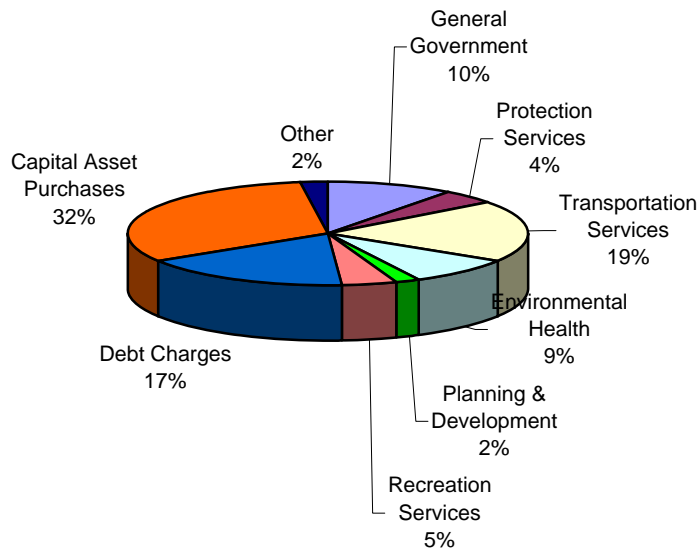
TOWN OF PARADISE

2010 BUDGET

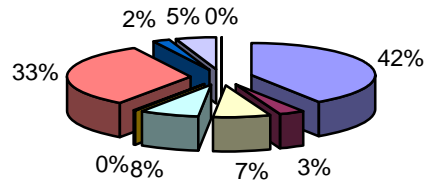
Statement of Revenue and Expenditure

	2010 BUDGET	% REV	2009 BUDGET	% REV	Increase (Decrease)	% Inc (Decr)
REVENUE						
Taxation	15,476,681	60%	12,259,100	56%	3,217,581	26%
Grants from Other Governments	8,443,649	33%	7,819,380	35%	624,269	8%
Sale of Goods and Services	540,800	2%	416,720	2%	124,080	30%
Other Revenue from Own Sources	1,398,200	5%	1,549,400	7%	(151,200)	-10%
Other Revenue	2,400	0%	2,400	0%	0	0%
Total Revenue	25,861,730	100%	22,047,000	100%	3,814,730	17%
EXPENDITURE						
1.0 General Government	2,650,179	10%	2,236,552	10%	413,627	18%
2.0 Protection Services	1,157,828	4%	1,051,731	5%	106,097	10%
3.0 Transportation Services	4,957,315	19%	4,110,936	19%	846,379	21%
4.0 Environmental Health	2,207,341	9%	1,742,996	8%	464,345	27%
5.0 Planning & Development	498,738	2%	421,918	2%	76,820	18%
6.0 Recreation Services	1,175,257	5%	1,089,615	5%	85,642	8%
7.0 Debt Charges	4,460,792	17%	4,555,652	21%	(94,861)	-2%
8.0 Capital Asset Purchases	8,202,881	32%	6,552,000	30%	1,650,881	25%
9.0 Other	551,400	2%	285,600	1%	265,800	93%
Total Expenditures	25,861,730	100%	22,047,000	100%	3,814,730	17%
Excess (Deficiency)	0	0%	(0)	0%	0	
	(0)	0%	0	0%	(0)	

EXPENDITURES



REVENUE BY SOURCE



- Property Tax Revenue - Residential
- Property Tax Revenue - Commercial
- Business Tax Revenue
- Water & Sewer Tax Revenue - Residential
- Water & Sewer Tax Revenue - Commercial
- Grants from Other Governments
- Sale of Goods and Services
- Other Revenue From Own Sources
- Other Revenue